



CASE STUDY

University Building, London



PROJECT OVERVIEW

deckpro pumps was approached by our client at a London university to deliver a solution for their failing pumps. It was essential for us to remedy the issue, to avoid any disruption to the students and occupants of the building. We swiftly refurbished the pumps on-site, providing uninterrupted operations and prolonged functionality.

THE CHALLENGE

Four 55kW pumps at a London university are used for circulating the heated and cooled water around their extensive site. Being in constant use meant that the pumps eventually began to leak. They very quickly went downhill to the point where they were hardly usable. The Site Management team needed a solution, fast.

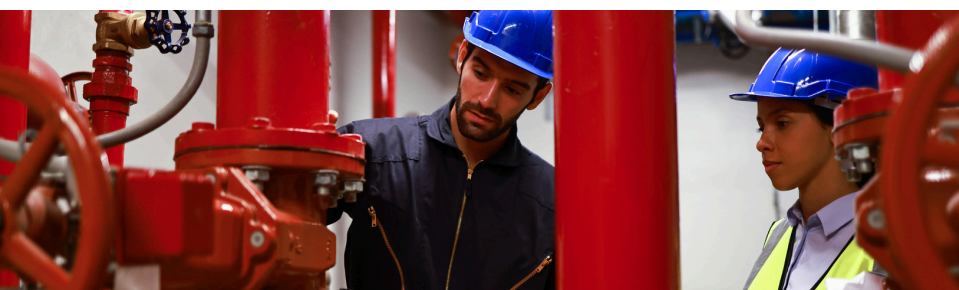
THE SOLUTION

deckpro pumps responded quickly with a site visit to investigate. We found that the pumps could be re-used but needed a full overhaul. Additionally, access was difficult and the pumps couldn't be easily removed, so the works needed to be done on site. The required parts were brought in within two days, the job was given emergency priority and all four pumps were refurbished on site within a week of receiving the initial phone call. The University was able to stay open with no interruption to services.



THE IMPACT

The refurbished pumps, with new wearing parts, can be expected to last for some time to come. The system is now running smoothly and efficiently again, and with regular maintenance any future issues will be remedied ahead of time.



020 3026 3650



info@deckpro.uk.com



www.deckpro.uk.com